

The **WasteEye** is a comprehensive family of products and services specifically tailored for the MBT plant and Recycling industry. It combines the factory floor data with the business information systems in an integrated information architecture capable of meeting your broader plant requirements and closing the information gap between production systems and business applications.

As part of MOTION's Open Client – Server Computing Technologies, WIPS gives you the freedom to choose what you need for today and for tomorrow, and to incorporate the technology investments you have already made. With MOTION's Integrated Manufacturing solutions you are built in a more incremental approach, from small pilots to large and distributed factory systems, without the long development and implementation cycles required with proprietary solutions.

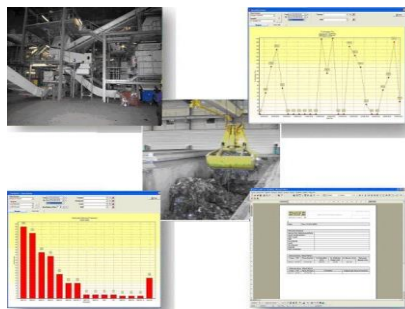
MOTION Hellas is an industrial Hi-Tech company with activities in the fields of Real Time Control Systems, Engineering, Manufacturing and CIM Software applications, services and products for SMEs. It is an ISO-9001 certified company since 1999. The current target of the company is to bring new IT and automation technology into new products and services. **MOTION Hellas** has specialised in the production of Data Collection Terminals and Electronic Components for on-line shop floor control in conjunction with information technology and software development for CIM and Telematics applications.

The WIPS System

The **WIPS System** (Waste Information Process System) It is an innovative user friendly Management Information System (MIS) for the supervision and process planning for the Mechanical and Biological Waste Treatment (MBT Process) and for for energy generation (Waste-To-Energy).

The system aims to:

- the improvement of drying process with continuous measurement and automatic optimization of all the critical parameters, regardless the type, quality and age of the waste, with the design and development of a Communication Data Collection Terminal
- automation design and optimization measurements algorithms of mechanical shorting process coupled with installation of special sensors and new improved shorting techniques.
- the real time monitoring of the basic and critical parameters from the Mechanical and Biological Waste Treatment
- Design and develop an intelligent maintenance monitoring and diagnostic system.
- support the Quality Control and Quality Assurance of the all Process



- provide a MIS software package for management services, Quality Control and Data Analysis
- create Documentation and Reporting for the overall process

The WIND System

The **WIND system** (Waste Information Database System) is an innovative MIS system for the Recycling Industry. The system aims to:

- the automation design and optimization measurements algorithms of mechanical shorting process coupled with installation of special sensors and new improved shorting techniques.



- the real time monitoring of the Weighbridge process
- the real time monitoring of the basic and critical parameters from the Mechanical Waste Treatment in the Daily Quality Document Process Control
- implement irrefutable processes for the on line and real time monitoring of the Process, the required information and measurements
- design and develop an intelligent maintenance monitoring and diagnostic system.

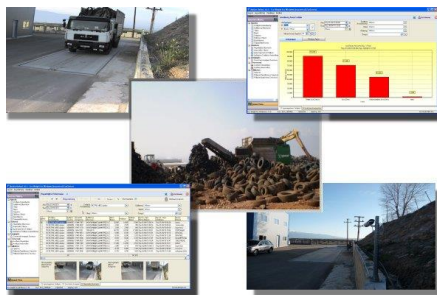
MOTION Hellas supports its clients through specifications analysis, architecture design and implementation management, in order to provide integrated solutions for Software and Automation systems in the fields of: Environmental Protection and Management (Restoration of landfill sites, Water supply projects, Sewerage systems projects, Waste water treatment and disposal projects), Cleaning and Solid Waste Management (WMS), Energy Administration Systems and Biogas Administration Systems

MOTION Hellas supports its clients in the identification of their requirements and in the selection, planning, implementation and testing of Automation and SCADA systems.

MOTION Hellas has executed a large number of Automation Systems for Wastewater Water Treatment Plants (WWTP), Restoration of landfill sites (Municipality of Ano Liosia, Municipality of Thessaloniki, Municipality of Pafos Cyprus), MBT Plants (Larnaka Cyprus, Mariscina Croatia, kastijun Croatia, Sofia Bulgaria, HRO Osnabruek Germany, EMAK Ano Liosia) and Recycling industries (EPANA Koropi and Fili) in co-operation with construction companies.

For more Information contact:
Dr John VOURNAS
Mechanical Engineer NTUA

- support the Quality Control and Quality Assurance of the all Process
- provide a MIS software package for management services, Quality Control and Data Analysis
- create Documentation and Reporting of the required parameters



The WBManager System

WBManager software is a Management and Recording Integrated System for the Waste collected by Recyclers and for the products derived from the separation process, which involves installation of:

- Management and Reporting System of Incoming Materials and Outgoing Products.
- On-Line Connection System with the Weighbridge.
- Photography System for Front and Rear Side of the Vehicle (Plate)
- Interconnection System Between Stations and Company's Central Offices, with the possibility of On-Line Process Monitoring and control
- Reporting and Statistical Data System at Company's Central Offices for Invoices' Exportation per Recycler and Client

The Green-WMS System

The Surveillance System of Waste Collection at Source **Green-WMS** involves a number of automation and IT systems such as:

- Measurement sensors and actuators,
- automation systems, arm's motion control systems and algorithms,
- measurement's optimization algorithms of automatic weighing,
- electronic controller for data recording and processing,
- electronic authentication and automatic recognition of bins (RFID tag),
- invoicing, receipt printing and reporting on the vehicle
- telematics system for vehicles' tracing and tracing (AVL),
- management system, quantitative and qualitative evaluation of collected data,
- for real time weighing and recording of vehicle's refuse

